

ROLLER CONVEYORS

RM 8130

Ball table

Not powered



24V

48V

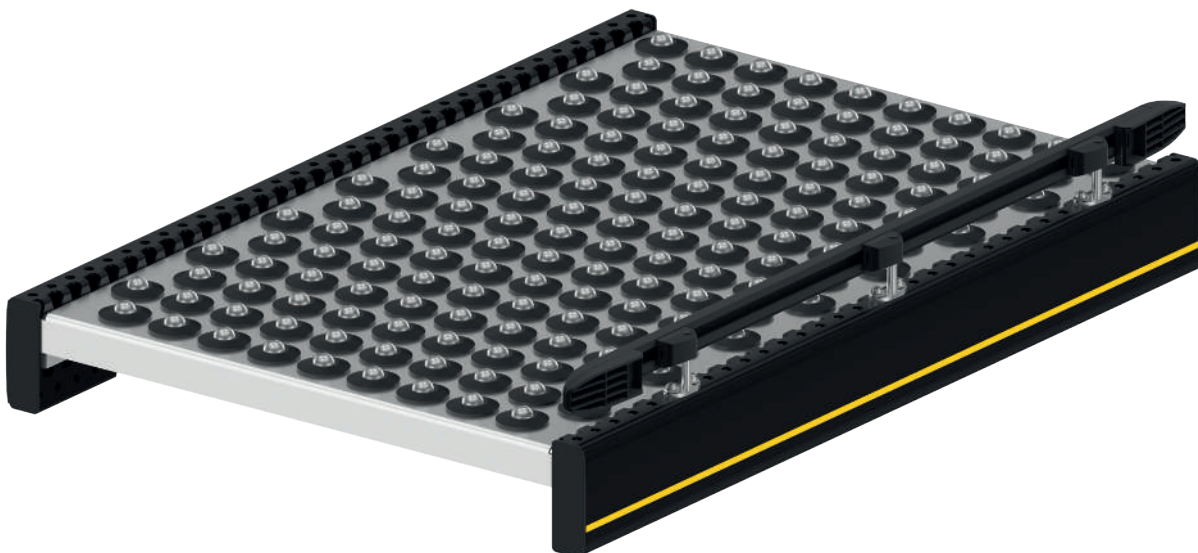
400V

Product description

The ball table transports materials with a solid bottom in any direction using very little force. It is especially suitable for workstation & inspection areas. So that a ball table can be combined with other conveyors, it is installed in a standard side profile.

Scope of delivery

- The module is fully assembled
- Please order supports and end caps separately



ROLLER CONVEYORS

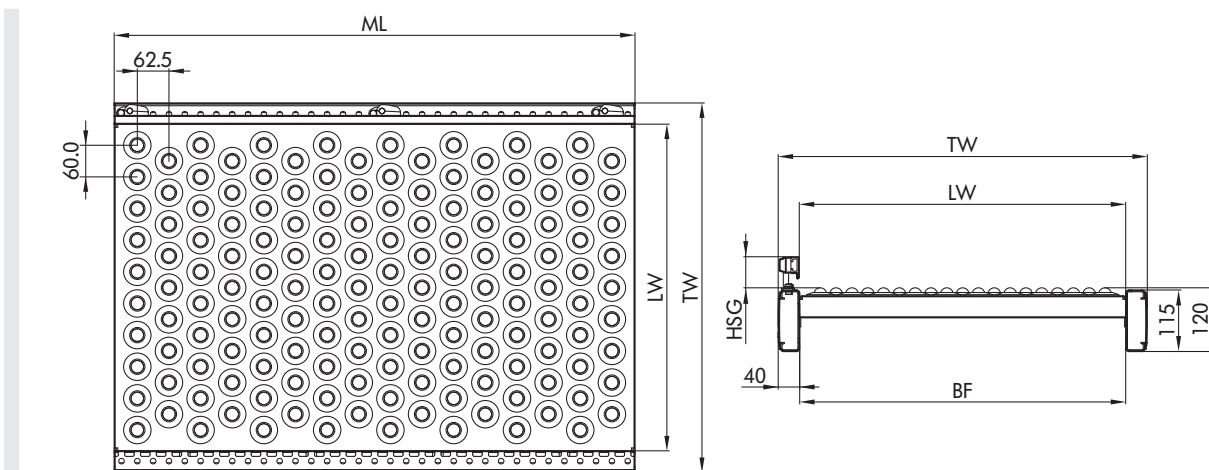
RM 8130

Ball table
Not powered

Technical data

General technical data	
Max. load capacity	100 kg/m
Incline/decline	Not suitable
Ambient temperature	-5 to +40 °C
Ball	
Ball type	Interroll Series 5500
Ball diameter	25.4 mm

Dimensions



BF	Rated width	420, 620, 840 mm (others on request)
LW	Clear width	BF (+120/-90 mm per side with flexible side guide)
ML	Module length	Max. 2160 mm
TW	Module width	BF + 80 mm
P	Pitch	60 mm
HSG	Side guide height	35 – 65 mm