

ROLLER CONVEYORS

RM 8210

Straight
Powered



24V

48V

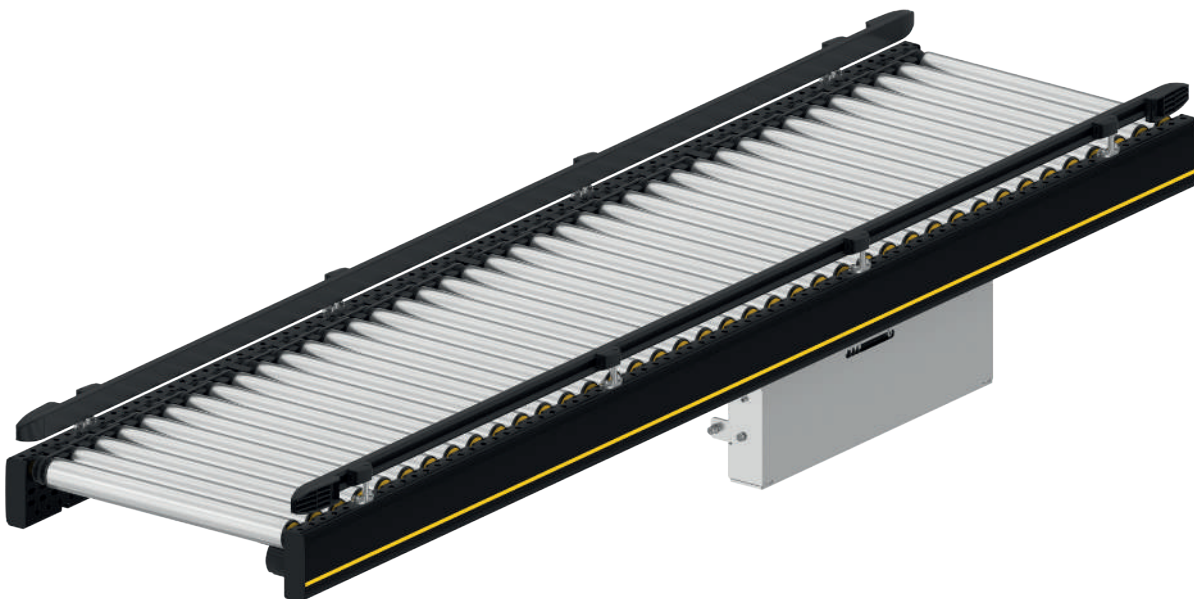
400V

Product description

The permanently powered flat belt conveyor RM 8210 serves as a transport conveyor that requires only one 400/460-V drive for long distances up to 12 m.

Scope of delivery

- Supply incl. 1 sensor per conveyor
- Module is completely assembled, except for the flat belt
- Please order supports and end caps separately



ROLLER CONVEYORS

RM 8210

Straight
Powered

Technical data

General technical data	
Max. load capacity*	50 kg/m
Transport conveyor speed*	0.1 to 2.0 m/s
Incline/decline	Not suitable
Ambient temperature	+5 to +40 °C
Roller	
Roller type	Interroll Series 1700
Roller diameter	50 mm
Roller material	Steel 1.5 mm, zinc-plated
Drive	
Rated voltage	400 V
Drive medium	Flat belt (transport)

*The combination of maximum values is not always possible.

ROLLER CONVEYORS

RM 8210

Straight
Powered

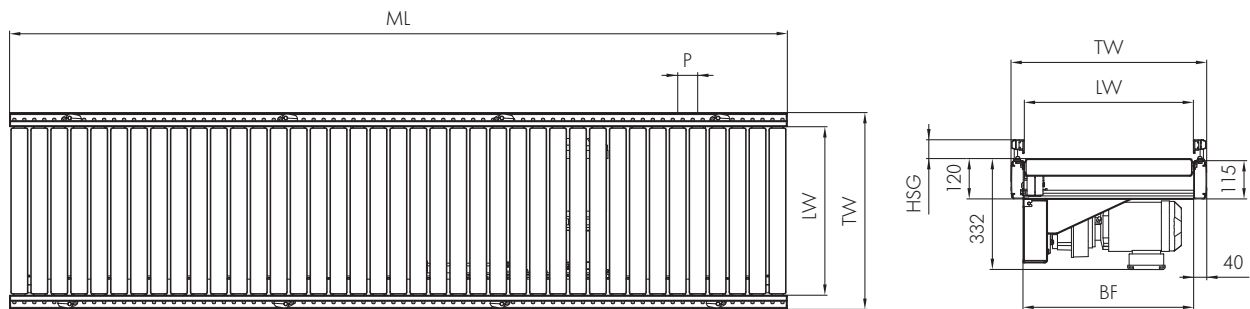


24V

48V

400V

Dimensions



BF	Rated width	420, 620, 840 mm (others on request)
LW	Clear width	BF (+120/-90 mm per side with flexible side guide)
ML*	Transport module length	Max. 12000 mm
TW	Module width	BF + 80 mm
P	Roller pitch	60/90/120/150 mm
HSG	Side guide height	35 – 65 mm

*If a slave curve is driven by a straight conveyor, the max. module length is reduced by 3000 mm, for 2 curves by 6000 mm.